



Date: _____ Type: _____
 Client: _____
 Project: _____

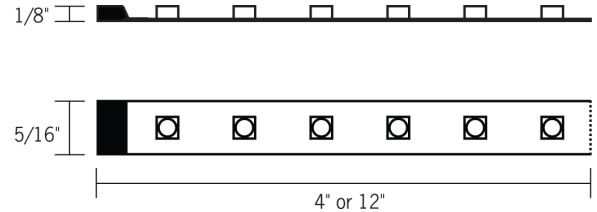
CLLED Tapelight Series

12VDC Damp Location

High Output Flexible Tapelight

Flexible, low voltage linear LED accent lighting system provides high quality illumination for many indoor applications including: Display Lighting, Under Cabinet, Cove and Soffit, Accent and Edge Lighting.

- High output LEDs provide excellent luminous intensities at low drive currents resulting in lower power consumption, low heat and consistent, stable performance.
- Modular “plug and play” system features a wide range of power supplies, controllers and connectors. System is easy to install with no need for field soldering.
- Available in 20' reels consisting of connected, individual 12" or 4" segments. Can also be purchased in individual 12" or 4" segments.
- Each segment includes male and female connector ends for continuous linear installations. Each 12" segment can also be cut (on the cut lines) in 2" increments to provide optimal fit and flexibility for any installation.
- Available in three color temperatures including 3000K (warm white), 4000K (neutral white) and 6000K (cool white).
- Dimmable using any of the CLLED series dimming controls.
- Easy to install using the peel & stick 3M double sided adhesive backing; tape can be directly mounted to most surfaces.
- For additional thermal heatsinking protection of the LEDs and an overall cleaner aesthetic, using the aluminum mounting channels is recommended. Aluminum mounting channels are easily installed utilizing the mounting clips, which includes four (4) spring steel mounting clips and screws.
- For added protection of LEDs, as well as subtle diffusion & glare control, clear or frosted diffusion lenses are available for use with channels.
- cCSAus Certified to UL standards.



CLLEDDRIVER Series High Output Tapelight Driver Sizing				
Watts per foot: 1.8W/ft.; Max Run: 30 ft.				
Model No.	Type	Input Voltage	Wattage	Max Load
CLLEDDRIVER24/12	Plug-in	12V DC	24W	13 ft.
CLLEDDRIVER36/12	Plug-In	12V DC	36W	20 ft.
CLLEDDRIVER20/12**	Hardwire	12V DC	20W	11 ft.
CLLEDDRIVER60/12**	Hardwire	12V DC	60W	33 ft.*

* If the max load exceeds the max run length, you may run multiple runs not to exceed the max run length.
 **Hardwire drivers may be remotely mounted up to 40' from start of run using 12 gauge wire. Refer to wiring chart on installation instructions for voltage drop information.

	CLLEDT3KHO	CLLEDT4KHO	CLLEDT6KHO
Color Temperature	3000K	4000K	6000K
Supply Voltage	12VDC	12VDC	12VDC
Watts (per ft)	1.8	1.8	1.8
Lumens (per ft)	130	148	155
Efficacy (Lm/W)	72	82	86
LED Beam Angle	120°	120°	120°
# of LEDs (per ft)	18	18	18
LED Spacing	5/8"	5/8"	5/8"
Cut Length	2"	2"	2"
Max Run (ft)	30	30	30



Display Supply & Lighting, Inc.

Display Supply & Lighting, Inc.
 1247 Norwood Avenue
 Itasca, IL 60174 USA
 TF 800.468.1488
 P 630.285.9660
 F 630.285.9670
 www.dslgroup.com

Copyright © 2014 Display Supply & Lighting, Inc. All rights reserved. All brand or product names are trademarks or registered trademarks of their respective owners. Due to continuous improvements and innovations, specifications may change without notice.

CLLED Tapelight Series

12VDC Damp Location Listed

Standard, High Output, and Super High Output Accessories

Date: _____ Type: _____

Client: _____

Project: _____

Plug-In Power Supplies and Accessories



Plug-and-Play Power Supply
120V/12VAC. Includes AC wall plug and female power output plug for easy installation
CLLEDDRIVER24/12
CLLEDDRIVER36/12



Plug-and-Play 3-Way Splitter
Includes (1) male plug connector and (3) female plug connectors. Approximately 2' long.
CLLEDY3CONN



Plug-and-Play Power Supply Extension
Includes male and female plug connectors.
CLLED48DRIVEXT
CLLED96DRIVEXT



Input Power Connector
Includes (1) male plug connector and (1) male flex tape connector.
CLLEDPC12
CLLEDPC19



Plug-and-Play 2-Way Splitter
Includes (1) male and (2) female connectors. Approximately 2' long.
CLLEDYCONN



Output Power Connector
Includes (1) male plug connector and (1) female flex tape connector
CLLEDPT

Hardwire Power Supplies and Accessories



Hardwire Power Supply
120V/12VAC. Includes wire pigtails on input and output sides. Must be maintained within an enclosure that meets local building codes and NEC (supplied by others).
CLLEDDRIVER20/12
CLLEDDRIVER60/12
CLLEDDRIVER60/12/277



Output Power Connector
Includes wire pigtail end and (1) female flex tape connector
CLLEDPCOUT



Input Power Connector
Includes wire pigtail end and (1) male flex tap connector.
CLLEDPC12HW
CLLEDPC19HW



Female Connector
6" Connector includes wire pigtail end and (1) female plug connector. Used to add plug and play female connector to hardwire power supplies.
CLLEDFEMALEPC



Male Connector
6" Connector includes wire pigtail end and (1) male plug connector. Used for easy plug in connection to plug and play power supply; wire end can be connected to controllers at the screw terminals
CLLEDMALEPC

Linear Connectors



Bridge Connector
Blank section used to bridge a gap where LEDs are not necessary.
CLLED6CONN - 6"
CLLED12CONN - 12"



Cross Connector
Used to connect up to four (4) TLT segments. May be cut to create 2-way "L" connection or 3-way "T" connection.
CLLEDCONN



Short Female-to-Female Connector
Used to connect male to female connectors.
CLLEDDFFCONN



Display Supply & Lighting, Inc.

Display Supply & Lighting, Inc.
1247 Norwood Avenue
Itasca, IL 60174 USA
TF 800.468.1488
P 630.285.9660
F 630.285.9670
www.dslgroup.com

Copyright © 2014 Display Supply & Lighting, Inc. All rights reserved. All brand or product names are trademarks or registered trademarks of their respective owners. Due to continuous improvements and innovations, specifications may change without notice.

CLLED Tapelight Series

12VDC Damp Location Listed

Standard, High Output, and Super High Output Accessories

Date: _____ Type: _____

Client: _____

Project: _____

Controllers / Accessories



LED Power Repeater

Enables synchronized control of multiple runs from one controller.

CLLEDPowerREP



0-10V Dimming Module

for use with standard 0-10V dimmers.

CLLEDDIMSA



DMX 512 CV Decoder

Designed to convert universal DMX 512 signal to PWM signal when used with a DMX 512 console.

Can control single color or RGB LEDs.

CLLEDDMXINTEF



Wall Plate Dimmer

allows adjustment of the brightness of the LEDs using the knob adjustment or the IR remote control.

CLLEDDIMWP

Mounting Accessories



Aluminum Mounting Channel

Provides excellent heat sinking and protection to the LEDs while ensuring a clean, straight run.

6' long x 1/2" wide x 1/4" tall

CLLEDCHANNEL 6' Standard Channel, Aluminum

CLLEDCHANNELSHOB 6' Standard Channel, Black

CLLEDCHANANG 6' 45° Angled Channel, Aluminum

CLLEDCHANANGB 6' 45° Angled Channel, Black

CLLEDRECHANNEL 6' Recessed Channel, Aluminum

CLLEDRECHANNELB 6' Recessed Channel, Black



End Caps

Creates a clean finish to the mounting channel. Set of two (2) end caps; one open, one closed.

CLLEDSHOCHANEND Standard Channel End Caps, Grey

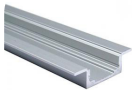
CLLEDSHOCHANENDB Standard Channel End Caps, Black

CLLEDANGEND Angled Channel End Caps, Grey

CLLEDANGENDB Angled Channel End Caps, Black

CLLEDRECHANEND Recessed Channel End Caps, Grey

CLLEDRECHANENDB Recessed Channel End Caps, Black



Mounting Clips

(4) clips and (4) Philips head screws per package. 24" Between clips recommended for most applications.

CLLEDCLIP



Acrylic Diffusion Lens

For use with mounting channel. Provides extra protection for the LEDs as well as diffusion to reduce glare.

CLLEDSHODIFF - Clear Lens

CLLEDSHODIFFFR - Frosted Lens



Display Supply & Lighting, Inc.

Display Supply & Lighting, Inc.
1247 Norwood Avenue
Itasca, IL 60174 USA
TF 800.468.1488
P 630.285.9660
F 630.285.9670
www.dslgroup.com

Copyright © 2014 Display Supply & Lighting, Inc. All rights reserved. All brand or product names are trademarks or registered trademarks of their respective owners. Due to continuous improvements and innovations, specifications may change without notice.